



# SpectralSuite 3.0

## LED Characterization and Analysis Software

### Pulsed Edition

The most complete and easy-to-use light metrology software available for Microsoft Windows 7, Microsoft Windows Vista, and Microsoft Windows XP

**SpectralSuite 3.0** is a standalone software solution for LED test and measurement. This flexible program supports all Orb Optronix products from spectroradiometers to full Electrical-Thermal-Optical LED characterization systems and third-party systems assembled from supported hardware\*. **SpectralSuite 3.0** is available in different configurations for different applications.

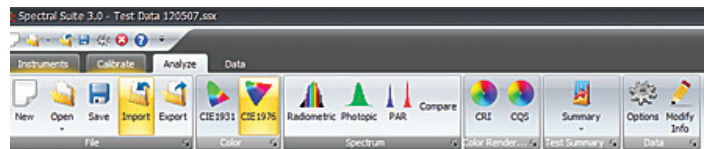
**Pulsed Edition** is for customers who want full-featured characterization and analysis including pulsed measurement.

#### Pulsed Edition Features:

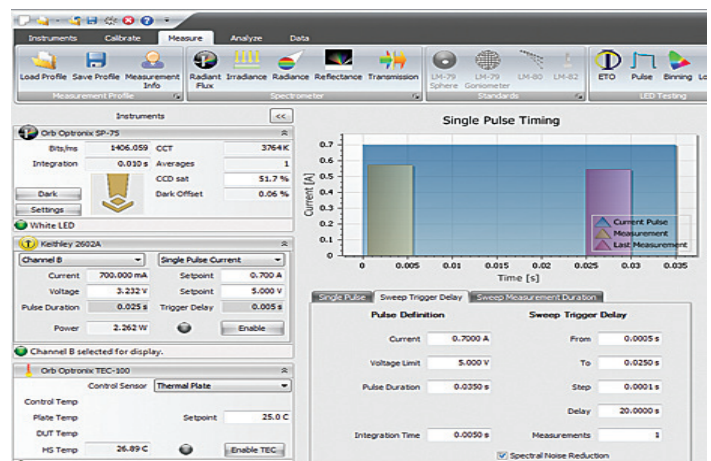
- **Pulsed Measurements** – Perform parametric sweeps of trigger delay or integration time with the click of one button
- **Flux Calibration Wizard** – Automated Total Luminous Flux Calibration on a sphere measurement system
- **Absorption Correction Wizard** – Perform a two part absorption correction to correct for absorption differences between the calibration lamp and device-under-test in a sphere measurement system
- **Radiant Flux Measurements** – Simply select the calibration file and absorption correction files to take calibrated radiometric measurements
- **Irradiance/Radiance Measurements** – Easily take calibrated Irradiance measurements
- **Import .csv, .ssx (SS3 data files), .etox (SS3 Legacy Files)**
  - Analysis Tools
  - Spectral Graphs: Radiometric Power, Photometric Power, and PAR vs. wavelength
  - Color Math Plots: CIE 1931, CIE 1960, CIE 1976 formats
  - Color Quality Plots: CRI, CQS
  - Custom Plots: Choose from up to 25 different x-axis parameters, 50 different y-axis parameters, and group values by up to 20 different parameters. (options dependent on the number for known parameter values)

\*Visit [www.orboptronix.com/product\\_spectralsuite3.html](http://www.orboptronix.com/product_spectralsuite3.html) for a full list of supported hardware manufacturers

\*\*Some features require calibrated radiometric data\*\*



Advanced Windows Interface with Ribbon Controls



Easy-To-Set Parameters for Pulsed Measurements

Orb Optronix, Inc.  
1003 7th Ave  
Kirkland, WA 98033

[www.orboptronix.com](http://www.orboptronix.com)  
© Orb Optronix Inc. 2012

Phone: 425.605.8500  
Fax: 801.912.2645  
Email: [sales@orboptronix.com](mailto:sales@orboptronix.com)



# SpectralSuite 3.0

## LED Characterization and Analysis Software

**SpectralSuite 3.0** is Orb Optronix' industry leading, patent pending, LED characterization software. Building on earlier SpectralSuite products, this newest version is available as a standalone software solution ready to be integrated into an LED test and measurement system, either as part of an Orb Optronix' Electrical-Thermal-Optical, Light Measurement System, or a system assembled from supported third-party hardware.

**Spectral Suite 3.0** is available in a variety of configurations to support any level of measurement and analysis, and can be upgraded to meet the changing needs of your organization.



- **LED Data Analytics Edition** is for viewing data collected through an external program, which can be imported to use SpectralSuite 3.0's advanced feature set
- **Spectra Edition** adds tools for measurement and instrument calibration to the data analytics viewer, for use with an existing supported system
- **Pulsed Edition** includes all the features of Spectra Edition with pulsed measurement capability, including Trigger Delay Sweep and Measurement Delay Sweep when connected to a supported power supply
- **Pro Edition** includes all features with the addition of full support of Electrical-Thermal-Optical (ETO) measurements. This edition is included in the purchase of an Orb Optronix ETO system

Software Features

Package	LED Analysis Package	Flux and Irradiance Calibration Wizards	Absorption Correction Wizard	Spectrometer Measurements	Irradiance & Radiance Measurements	Transmission Measurements	Reflection Measurements	Pulsed Measurements	Binning	ETO (Current or Voltage sweep with optional thermal)	LM79 Photometric Test and IES Report Generator and Viewer	LM80 Photometric Test
Nexus Runsafe (LM-80)	✓	✓	✓	✓	✓	✓	✓	✓		✓		✓
SS3 Goniometer Edition (LM-79)	✓	✓	✓	✓	✓	✓	✓	✓		✓	✓	
SS3 Pro	✓	✓	✓	✓	✓	✓	✓	✓	✓	✓		
SS3 Pulsed Edition	✓	✓	✓	✓	✓	✓	✓	✓	✓	No Thermal Control		
SS3 Spectra	✓	✓	✓	✓	✓	✓	✓					
SS3 LED Data Analytics	✓											

Orb Optronix, Inc.  
1003 7th Ave  
Kirkland, WA 98033

[www.orboptronix.com](http://www.orboptronix.com)  
© Orb Optronix Inc. 2012

Phone: 425.605.8500  
Fax: 801.912.2645  
Email: [sales@OrbOptronix.com](mailto:sales@OrbOptronix.com)